

Single-Engine Monitoring System

Features:



View of Controller / Display

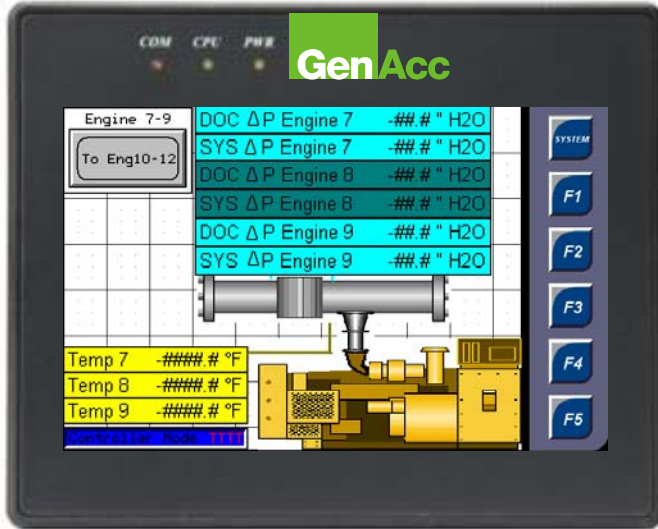
- One Type-K Thermocouple
- One 0-25" H2O Diff. Pressure Transmitter (across DOC)
- One 0-50" H2O Pressure Transmitter (for system BP)
- PLC Controller with Display for real-time data check
- Data-logging of Temp/Pressure (per EPA spec)
- Alarm for high Temp/Pressure
- Micro-SD memory card for data-log retrieval
- Ethernet capable for SCADA connection (price adder)
- All components mounted in NEMA 1 enclosure (display mounted on door)

Specifications:

100 – 240 Vac Input

Note: Monitoring system panel shall be installed within 10' of exhaust after-treatment unit; install requires routing power to panel, routing thermocouple wire, and tubing for differential pressure transmitters

Multi-Engine Monitoring System



Optional Large Color Display – Shows Temp and Pressure for each unit

Features:

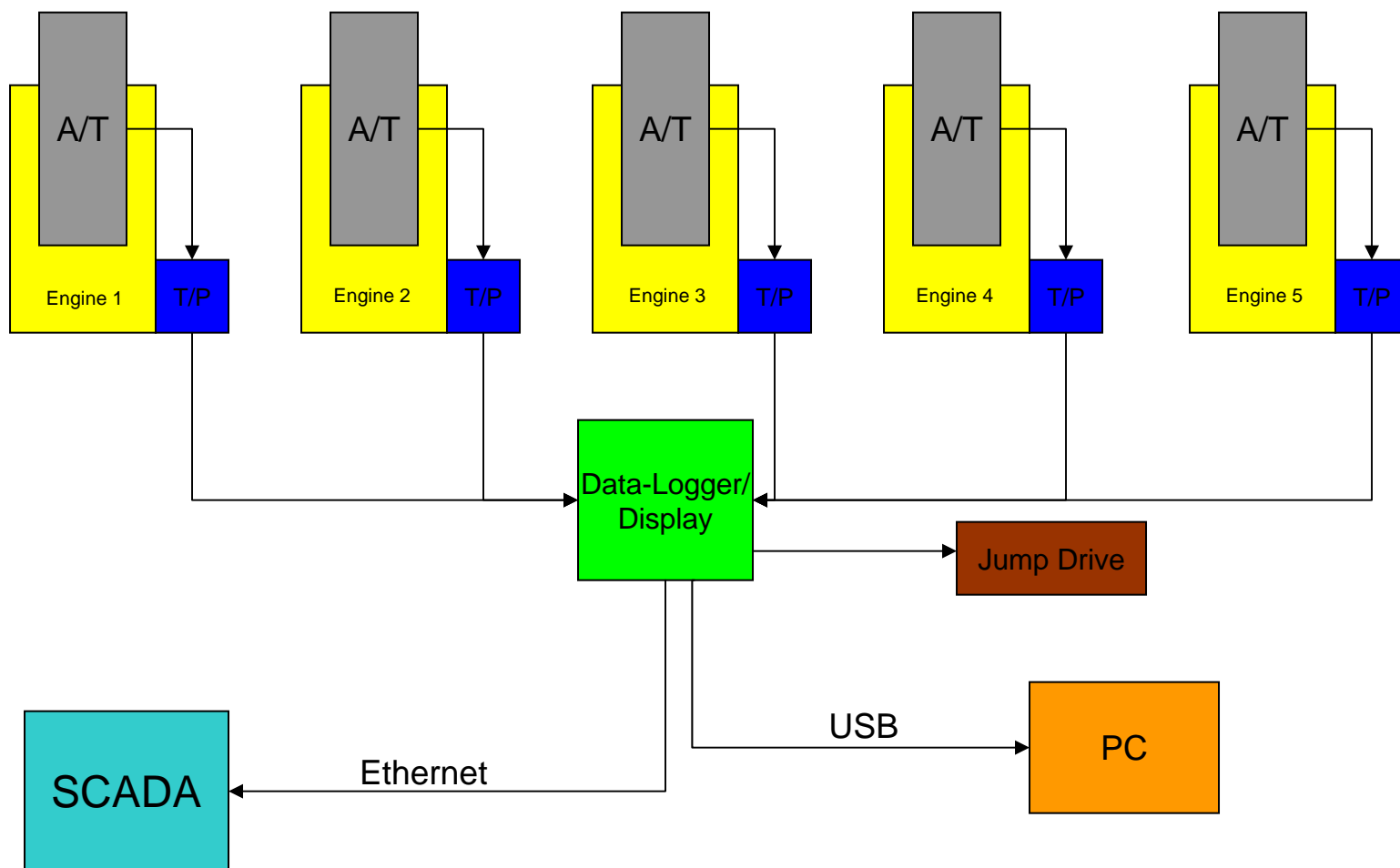
- One enclosure per engine (contains pressure and temp transmitter)
- Main Display for viewing of all data real-time
- Data-logging of Temp/Pressure (per EPA spec)
- Alarm for high Temp/Pressure
- Ethernet capable for SCADA connection
- All components mounted in NEMA 1 enclosures (display mounted on door)

Specifications:

100 – 240 Vac Input

Note: Main display panel shall be installed in a central location; install requires routing power to panel(s), routing thermocouple wire, tubing for differential pressure transmitters

Multi-Engine Layout for Monitoring System



A/T – Aftertreatment
T/P – Sensor Enclosure